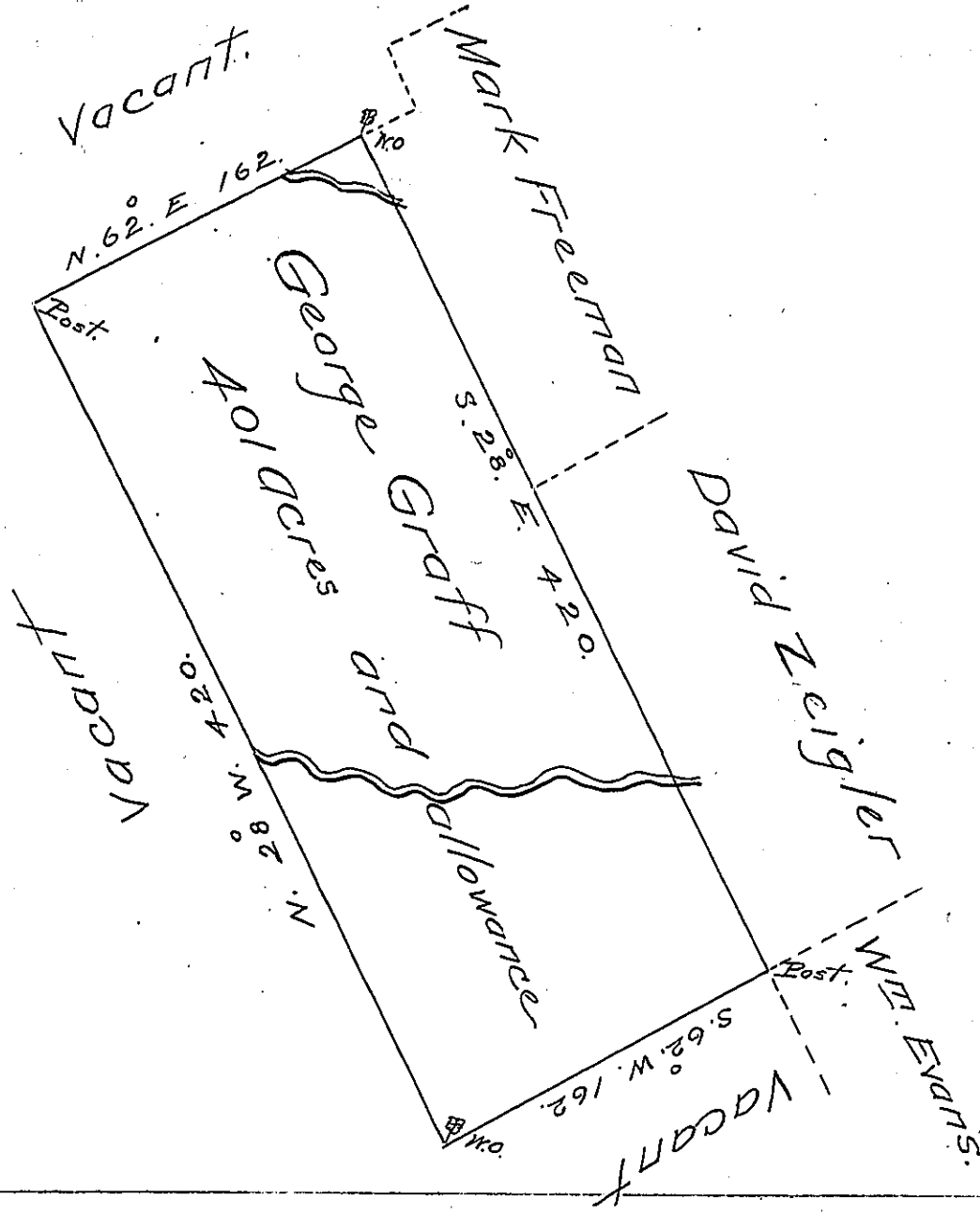


296 - 296



A Draught of a tract of Land situate on the waters of Mushannon Creek in Bedford County containing 401 acres and allowance Surveyed November the 6<sup>th</sup> 1785 for George Graff on a warrant dated February the 28<sup>th</sup> 1785

George Woods D.S.

To John Lukens Esquire }  
 Surveyor General }

IN TESTIMONY that the above is a copy of the original remaining on file in the Department of Internal Affairs of Pennsylvania, made conformably to an Act of Assembly approved the 16th day of February, 1833, I have hereunto set my Hand and caused the Seal of said Department to be affixed at Harrisburg, this twenty third day of November 1904.

*Joseph P. Brown*  
 Secretary of Internal Affairs.